

EMU – CTS | Emulsion Make-up Unit – Compact Tank System



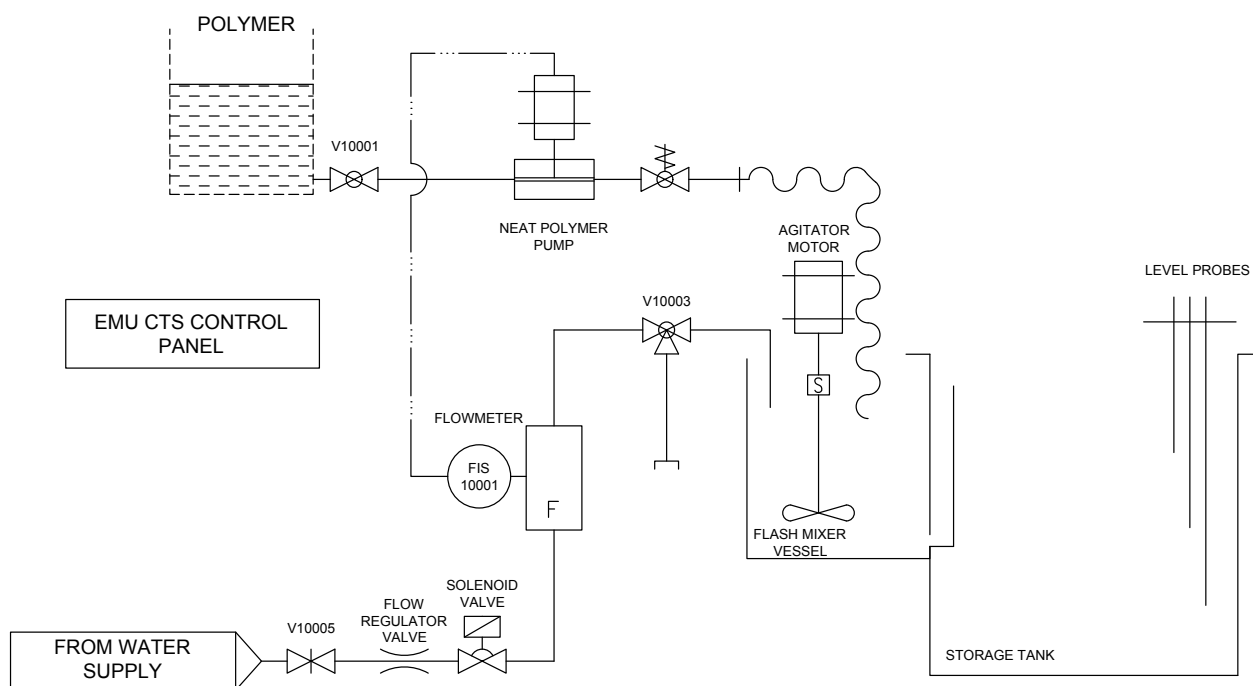
The EMU – CTS is supplied as a skid unit. It comprises a polymer feed pump and the electrical control panel mounted on a stainless steel frame, a flash mixing tank with agitator, a 200 litre tank, integral storage with level probes, polymer inlet pipework, three way valve on the water inlet, a solenoid valve and pulsing water meter on the water inlet. Also supplied with an IBC, Sotz connector and 3m of chemical delivery hose. The unit is supplied pre-wired ready for operation.

- Mixes inverse emulsion grade polymer and water into a homogeneous solution
- Used also on dispersion and liquid grades of polymer

Technical Specifications

Dimensions	1010mm x 700mm x 1250mmH
Weight	100kg
Noise	<70dB (A) measured at 1m distance
Capacity	Up to 6000 l/h as solution, up to maximum of 1%
Service Requirements:	
Voltage Range	3ph/50Hz power supply and neutral
Water Supply	Potable water
Water Requirements	1200–6000 L/hr @ 2bar
Polymer Feed	Up to 70l/h neat polymer
Accessories:	IBC Storage Facilities, Discharging system and storage tank for neat polymer
	Dosing Pumps

*Polymer not included



- Fully automatic operation
- Simple design and operation
- Stainless steel construction
- Flexible polymer injector line moveable for calibration
- Polymer automatically proportioned to water inflow
- Pre-wired and piped
- Superior polymer solution quality due to the polymer/water proportioning system & homogeneous mixing
- More economic use of polymer
- Consistent and repeatable polymer solutions
- Small footprint
- Plug and play